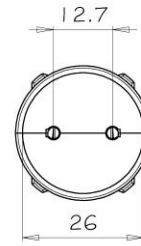
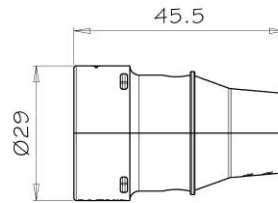


art. P1004/1

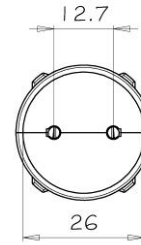
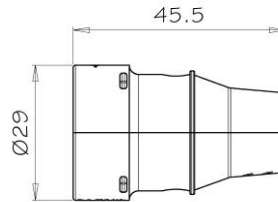
Portalamпада rivettato G13 in Policarbonato.  
Cavo piatto doppio, uscita assiale  
*Riveted polycarbonate lampholder G13 for fluorescent tube*  
IP40 con tubo di protezione P1033  
IP20



1

art. P1004/2

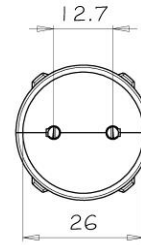
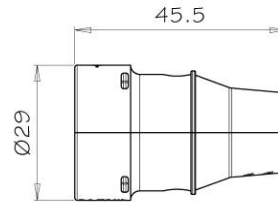
Portalamпада rivettato G13 in policarbonato.  
Cavo tondo doppio, uscita assiale  
*Riveted polycarbonate lampholder G13 for fluorescent tube*  
IP40 con tubo di protezione P1033  
IP20



2

art. P1020

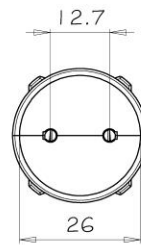
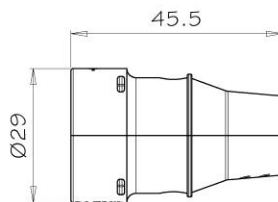
Portalamпада rivettato G13 in policarbonato.  
Cavo tondo singolo, uscita assiale  
*Riveted polycarbonate lampholder G13 for fluorescent tube*  
IP40 con tubo di protezione P1033  
IP20



3

art. P1020/1

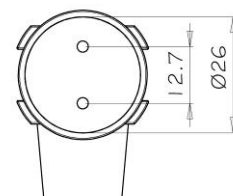
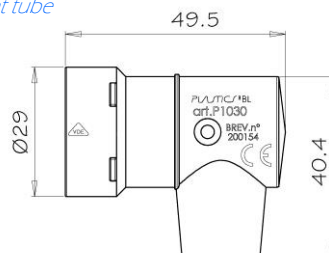
Portalamпада rivettato G13 in policarbonato.  
Cavo piatto singolo, uscita assiale  
*Riveted polycarbonate lampholder G13 for fluorescent tube*  
IP40 con tubo di protezione P1033  
IP20



4

art. P1030

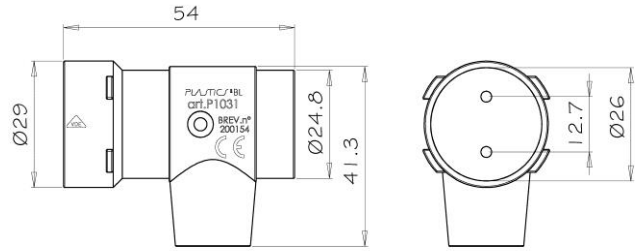
Portalamпада rivettato G13 in policarbonato.  
Cavo tondo doppio, uscita a 90°  
*90° riveted polycarbonate lampholder G13 for fluorescent tube*  
IP40 con tubo di protezione P1033  
IP20



5

art. P1031

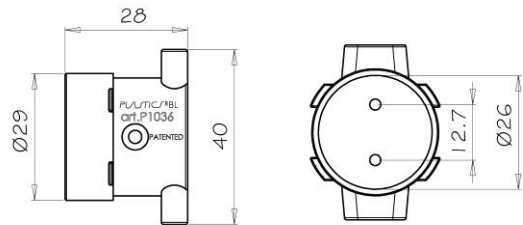
Portalamпада rivettato G13 in policarbonato.  
 Portastarter allineato, cavo tondo singolo, uscita a 90°  
*90° riveted polycarbonate lampholder G13 for fluorescent tube holder and starter*  
 IP40 con tubo di protezione P1033  
 IP20



6

art. P1036

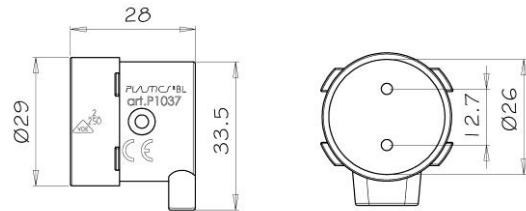
Portalamпада rivettato G13 in policarbonato.  
 Cavo piatto di transito, uscita a 90°  
*90° riveted polycarbonate lampholder G13 for fluorescent tube with transit cable*  
 IP40 con tubo di protezione P1033  
 IP20



7

art. P1037

Portalamпада rivettato G13 in policarbonato.  
 Cavo piatto singolo, uscita a 90°  
*90° riveted polycarbonate lampholder G13 for fluorescent tube*  
 IP40 con tubo di protezione P1033  
 IP20



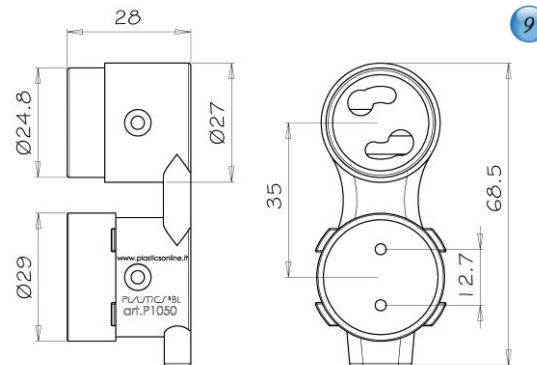
8

art. P1050

Portalamпада rivettato G13 in policarbonato.  
 Cavo piatto singolo, uscita a 90° con portastarter  
*90° riveted polycarbonate lampholder G13 for fluorescent tube and starter holder*  
 IP40 con tubo di protezione P1033  
 IP20



PATENTED



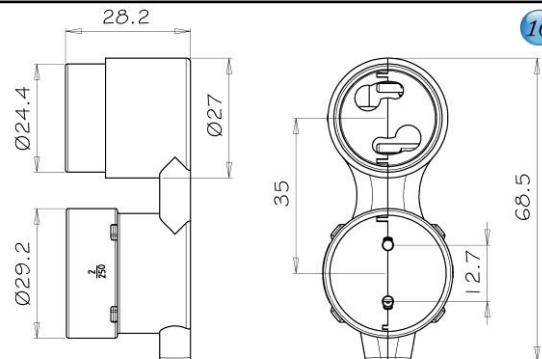
9

art. P1050/U

Portalamпада G13 in policarbonato. Cavo piatto singolo, uscita a 90° con portastarter. Classe isolamento II  
*90° polycarbonate lampholder G13 for fluorescent tube and starter holder*  
 IP40 con tubo di protezione P1033  
 IP20



PATENTED



10

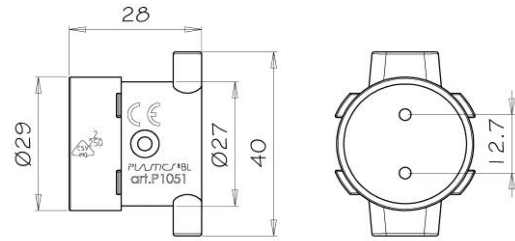
art. P1051

Portalamпада rivettato G13 in policarbonato.  
 Cavo piatto di transito, uscita a 90°  
*90° riveted polycarbonate lampholder G13 for fluorescent tube with transit cable*  
 IP40 con tubo di protezione P1033  
 IP20

11



PATENTED



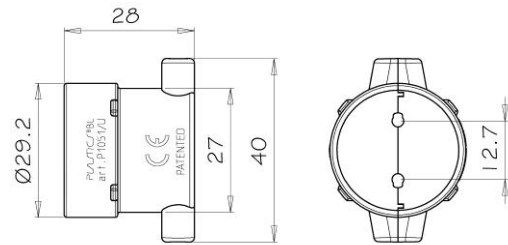
art. P1051/U

Portalamпада G13 in policarbonato. Cavo piatto di transito, uscita a 90°.  
 Classe isolamento II  
*90° polycarbonate lampholder G13 for fluorescent tube holder with transit cable*  
 IP40 con tubo di protezione P1033  
 IP20

12



PATENTED



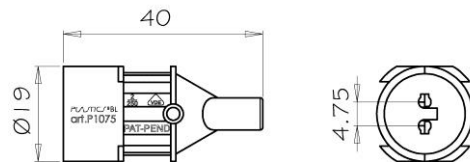
art. P1075

Portalamпада rivettato G5 in policarbonato.  
 Cavo piatto, uscita assiale  
*Riveted polycarbonate lampholder G5 for fluorescent tube*  
 IP40 con tubo di protezione P1081  
 IP20

13



PATENTED



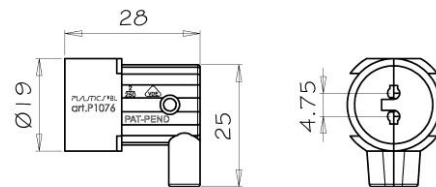
art. P1076

Portalamпада rivettato G5 in policarbonato.  
 Cavo piatto, uscita 90°  
*90° riveted polycarbonate lampholder G5 for fluorescent tube*  
 IP40 con tubo di protezione P1081  
 IP20

14



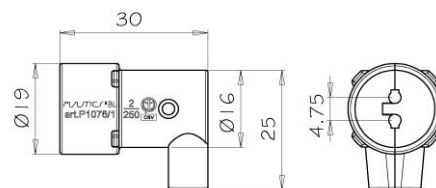
PATENTED



art. P1076/1

Portalamпада rivettato G5 in policarbonato.  
 Cavo piatto 2x1, uscita 90°  
*90° riveted polycarbonate lampholder G5 for fluorescent tube*

15



art. P1120

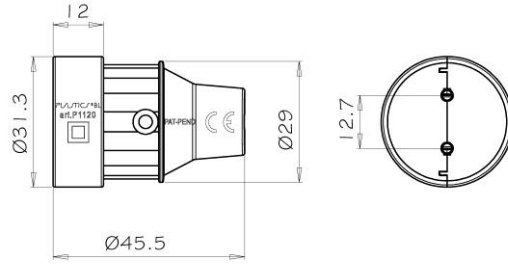
Portalamпада rivettato in policarbonato per lampada LED Ø28 mm  
Cavo piatto sigolo, uscita assiale. Classe isolamento II

*Riveted polycarbonate lampholder for LED Ø28 mm*

IP20



PATENTED



16

art. P1127

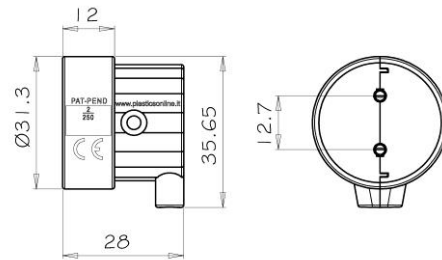
Portalamпада rivettato in policarbonato per lampada LED Ø28 mm  
Cavo piatto sigolo, uscita 90°. Classe isolamento II

*90° riveted polycarbonate lampholder for LED Ø28 mm*

IP20



PATENTED



17

art. P1128

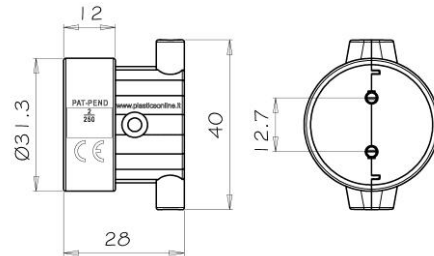
Portalamпада rivettato in policarbonato per lampada LED Ø28 mm  
Cavo piatto di transito, uscita 90°. Classe isolamento II

*90° riveted polycarbonate lampholder for LED Ø28 mm with transit cable*

IP20



PATENTED



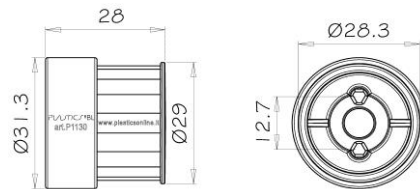
18

art. P1130

Portalamпада "Neutro" in policarbonato per lampada LED Ø28 mm  
*Polycarbonate lampholder for LED Ø28 mm*



220V  
F  
N



19